

Corporate Sustainable Development and Deviations from “the Corporate Sustainable Development Best-Practice Principles for TWSE/TPEX Listed Companies” and Reasons

Evaluation Item	Implementation Status			Deviations from “the Corporate Social Responsibility Best-Practice Principles for TWSE/TPEX Listed Companies” and Reasons
	Yes	No	Abstract Illustration	
1. Does the company establish exclusively (or concurrently) dedicated unit to promote corporate sustainable development, with first-line managers authorized by the Board to be in charge of its management and the Board supervise the management status?	✓		<p>The “Corporate Sustainable Development Best Practice Principles” and “Corporate Sustainability Committee Organizational Charter” were passed by the Board of Directors to embrace sustainable development and fulfill our corporate social responsibility. These reflect Evergreen Marine’s vision and commitments on economic, environmental and social issues. Evergreen Marine has set up the “Corporate Sustainability Committee” to ensure the continued promotion and implementation of sustainable corporate management practices. The President and Chief Executive Vice President of Business Coordination Dept. respectively serve as the Chairman and Director General of the CSR Committee; members of the Committee are made up of 15 department heads, as well as 23 executive secretaries.</p> <p>The Committee is divided into the Employee Care/Community Care Issues Team, Environmental Protection Issues Team, Corporate Governance/Economic Issues Team and Product/Supplier Management Issues Team. The first-line managers authorizes Business Coordination Dept. to be responsible for the planning and promotion of various businesses. The relevant departments in each team are responsible for each businesses. The Corporate Sustainability Committee shall convene at least once a quarter and discuss economic, environmental, and social issues. The Corporate Sustainability Committee review actions and compile the content by Corporate Sustainability</p>	None

Evaluation Item	Implementation Status			Deviations from “the Corporate Social Responsibility Best-Practice Principles for TWSE/TPEX Listed Companies” and Reasons
	Yes	No	Abstract Illustration	
			<p>Reports. All content is reviewed by members of each group of the committee and reviewed by department heads in the group. The committee reports the implementation progress, work performance and work plan to the board of directors every year according to the impact, risks and opportunities of the issues. The board of directors will review its annual implementation in accordance with the three major aspects of corporate social responsibility, with green fleet, promotion of social welfare activities and supplier management. Please refer to the Table 1 for the structure of Corporate Sustainability Committee.</p>	
<p>2. Does the company conduct a risk assessment of environmental, social and corporate governance issues, which is related to the company's operations, and formulate relevant risk management policies or strategies by Materiality Principle?</p>	✓		<p>For the purpose to reduce the risks of financial, economic impact, terrorism, climate change and pandemic, Evergreen has aggressively identified and formulated the management policies and countermeasures for strategic & operating risks, market risks, legal risks, financial risks (including exchange rates, interest rates, prices, credit and volatility risks) , crew/vessel/cargo safety risks and global epidemics outbreak risks, and disclosed in Evergreen's website. Recently, in view of the increasingly severe climate change, Evergreen has introduced the framework of Task Force on Climate-related Financial Disclosure (TCFD) to identify the opportunities and challenges brought by climate change and extreme climate. Climate change impact that affected operations has been integrated into Evergreen's risk assessment system and corresponding measures has also been adopted as well. Please refer to the Table 2 for the corresponding measures.</p>	None

Evaluation Item	Implementation Status			Deviations from “the Corporate Social Responsibility Best-Practice Principles for TWSE/TPEX Listed Companies” and Reasons
	Yes	No	Abstract Illustration	
			With aim to have stakeholders better understand our corporate sustainable promotion plan and implementation results, Evergreen regularly publishes relevant information on the website and Corporate Sustainable Report.	
3. Environment Issue				
(1) Does the company establish proper environmental management systems based on the characteristics of their industries?	✓		As a leader in maritime industry, Evergreen is committed to building an environmentally friendly fleet, actively participating many international environmental protection projects, and proceeding from various aspects such as weather navigation analysis, optimization of route speed, in order to synchronize with the world and to protect the marine environment. We have established “Safety and Environmental Management System” for our fleet and onshore personnel, and obtained the ISO 14001 Environmental Management System (The validity period of the certificate is from August 13, 2020 to August 12, 2023). We implement the environmental protection management system with a responsible attitude to prevent the occurrence of environmental protection accidents and minimize the risk. There was no major environmental protection accident in 2021.	None
(2) Does the company endeavor to improve energy efficiency and use renewable materials which have low impact on the environment?	✓		The Company is cautiously abiding by international environmental protection conventions and environmental protection regulations in various regions, and is committed to pollution prevention, energy conservation and greenhouse gas reduction, and planetary protection. Strict standards and operating procedures are set for the environmental protection and pollution prevention for ships sailing at sea. The Company	None

Evaluation Item	Implementation Status			Deviations from “the Corporate Social Responsibility Best-Practice Principles for TWSE/TPEX Listed Companies” and Reasons
	Yes	No	Abstract Illustration	
(3) Does the company assess the potential risks and opportunities of climate change for the company and take measures to respond to climate-related issues?	✓		<p>uses various operational management measures, emission reduction strategies and ship design optimization to reduce ship energy consumption, and continuously introduces a new generation of eco-friendly ships to reduce pollution and greenhouse gas emissions, in order to contribute to the environmental protection of the earth.</p> <p>The building of Evergreen Marine adheres to an energy-saving policy, in order to achieve energy-saving goals and eliminate energy waste, in addition to large-scale air-conditioning system using energy-efficient motors, the office lighting part has been completely changed to LED energy-saving lamps, so as to control high energy consumption and long-time use of equipment through active management. In addition, if the refrigerator is broken, we will replace it with the energy-efficient refrigerator. When an official vehicle is to be replaced, a vehicle with less fuel consumption will be purchased. As of 2021, all of the chassis at Evergreen Kaohsiung Container Terminal have now been upgraded with all-rubber tires. We expect all dock-side chassis to be fitted with all-rubber tires in the future, a move that will reduce the complexity of recycling and associated environmental pollution.</p> <p>In view of the increasingly severe climate change, Evergreen has introduced the framework of Task Force on Climate-related Financial Disclosure (TCFD) to identify the opportunities and challenges brought by climate change and extreme climate. The climate change impact that affected operations, such as increased frequency of extreme weather, changes in domestic and foreign regulations,</p>	None

Evaluation Item	Implementation Status			Deviations from “the Corporate Social Responsibility Best-Practice Principles for TWSE/TPEX Listed Companies” and Reasons
	Yes	No	Abstract Illustration	
(4) Does the company summarize greenhouse gas emissions, water consumption and total weight of waste in the past two years and formulate policies for energy conservation, carbon reduction, greenhouse gas reduction, water use reduction or other waste management simultaneously?	✓		<p>increased customers awareness of environmental protection, changes in energy policies and equipment requirements has further been incorporated into risk assessment systems and corresponding measures has also been adopted as well.</p> <p>In the face of the challenges of global extreme climate, for the fleet, the most serious thing is weather climate change, which has a negative impact on the safety of ships sailing. In order to take into account the safety of the fleet, the company asks Japan (Weather News Information(WNI)) company long-term cooperation, providing the world's three major marine meteorological forecast and advisory services ships in all corners of the globe are informed of the atmosphere in local waters as early as possible information to facilitate the use of distancing measures to ensure the safety of navigation.</p> <p>Evergreen Marine conducts comprehensive management of greenhouse gas emissions, water resource and waste treatment in accordance with the three major aspects of ships at sea, shore operations, office buildings in order to monitor, review and implement relative reduction programs.</p> <p>Evergreen monitors the fuel consumption and host operating status of each ship of the fleet in time every day, to ensure the propulsion performance of the main engine. Each vessel also feeds back the total fuel consumption and total navigation distance of the month to the ship management unit at the end of each month. The information reported is used to calculate the CO₂ emissions, so as to monitor the greenhouse gas emissions of the entire fleet and achieve the fleet's carbon reduction targets. The</p>	None

Evaluation Item	Implementation Status			Deviations from “the Corporate Social Responsibility Best-Practice Principles for TWSE/TPEX Listed Companies” and Reasons
	Yes	No	Abstract Illustration	
			<p>Company currently takes the following measures to reduce CO₂ emissions:</p> <ol style="list-style-type: none"> 1. Optimize the route and sail at suitable speed. 2. Continuous monitoring of ship fuel consumption and host operating status to ensure the propulsion performance of the main engine. 3. Use the weather navigation to provide the fleet with real-time weather information, in order to select the best route for maximum fuel efficiency. 4. Improve cargo handling efficiency to shorten port stays. 5. Properly plan the ship’s cargo load and reduce ballast water loading to maximize economic benefits. 6. Application of special anti-fouling paint to ship hulls. 7. Actively participate in the California Voluntary Deceleration Zone Award Incentive program. <p>In response to global trends, green shipping is now being developed by Evergreen Marine and CO₂ reduction targets have been set. The mid-term target of 50% reduction in CO₂ emissions by 2030 is planned with 2008 as the baseline; the long-term target is to reduce the emission rate by 70% in 2050. According to the statistics of CO₂ emissions in 2021, a reduction of 33.9% has been achieved.</p> <p>The annual statistics on greenhouse gas emissions are also verified by a third party, Class NK. The relative statistics in for greenhouse gas emissions, water consumption and waste management in recent years are shown in Table 3.</p>	

Evaluation Item	Implementation Status			Deviations from “the Corporate Social Responsibility Best-Practice Principles for TWSE/TPEX Listed Companies” and Reasons
	Yes	No	Abstract Illustration	
4. Social Issue				
(1) Does the company formulate appropriate management policies and procedures according to relevant regulations and the International Bill of Human Rights?	✓		<p>Implementing the business concept of creating profits, caring for employees and giving back to the society is the consistent guarantee of Evergreen Marine to all stakeholders.</p> <p>Evergreen Marine formulated Human Rights Policies and regularly conducts Human Right Risks and Impact Assessment to promote the working environment where all workers are treated with respect and dignity in accordance with the UN Universal Declaration of Human Rights (UDHR), the UN Global Compact (UNGC), the ILO Declaration on Fundamental Principles and Rights at Work and the ILO Maritime Labour Convention, 2006 (MLC, 2006).</p> <p>In 2021, all Evergreen Marine shore personnel were over the age of 18 while crew members over 16. Evergreen Marine did not have any violations of human rights in 2021. For more information on Evergreen Marine’s human rights policies, please refer to the corporate websites (https://csr.evergreen-marine.com/csr/tw/jsp/CSR_HumanRights.jsp)</p>	None
(2) Does the company set and implement reasonable employee welfare measures (including compensation, leave and fringe benefits) and reflect the operating performance or results on employees compensation?	✓		<p>To attract and retain quality talent as well as strengthen our global business team, the Company provide shore and ship personnel with competitive salary and fringe benefits. Our remuneration policy adheres to labor laws and regulations. The generous remuneration packages do not differ on the basis of gender, religion, race or political bias. In addition, annual bonuses are also paid to employees based on the Company’s profitability and individual performance for that year as a reward for outstanding performance.</p>	None

Evaluation Item	Implementation Status			Deviations from “the Corporate Social Responsibility Best-Practice Principles for TWSE/TPEX Listed Companies” and Reasons
	Yes	No	Abstract Illustration	
(3) Does the company provide a healthy and safe working environment and organize training on health and safety for its employees on a regular basis?	✓		<p>Remuneration for national and foreign crew members must not only meet the standards set by MOTC (Ministry of Transportation and Communications) but also the collective bargaining agreement with the ITF (International Transport Workers’ Federation).</p> <p>The Company has established the Occupational Safety and Health Management Department according to law and deployed safety and health management personnel to formulate, plan, and promote occupational safety and health business, so as to effectively prevent the occurrence of occupational disasters. The relevant measures are as follows:</p> <ol style="list-style-type: none"> 1. Establish safety and health codes of practice in accordance with the Occupational Safety and Health Act, and follow the instructions and require employees to comply. 2. Conduct safety and health education and training for new and employed employees in accordance with the Occupational Safety and Health Act. 3. Conduct fire safety education and training for employees in accordance with the provisions of the Fire Services Act. 4. Provide regular health checkups and medical consultations for employees. 5. Establish a 24-hour security alert to ensure the company’s property and personnel safety. 	None
(4) Does the company provide its employees with effective career development training programs?	✓		<p>The Company has always embraced the philosophy that “talents are the most important assets of an enterprise”. We offer equal work opportunities to young people and patiently teach them everything from</p>	None

Evaluation Item	Implementation Status			Deviations from “the Corporate Social Responsibility Best-Practice Principles for TWSE/TPEX Listed Companies” and Reasons
	Yes	No	Abstract Illustration	
			<p>scratch. Current employees are provided with a range of solid, professional training courses and a proactive rotation scheme. Employees’ professional abilities and international horizons are honed through “rotation and expatriate assignment” in order to boost our operating performance. The training expenses for both shore and ship personnel totaled NTD 3.85 million in 2021. An innovative “ship-shore rotation” system at Evergreen also provides ship personnel with the opportunity to work on shore. The professional knowledge of outstanding ship personnel helps to ensure that the ship scheduling, freight space configuration, terminal loading/unloading and ship maintenance operations will also satisfy the needs of operations at sea. The overall efficiency of the service chain can then be improved. Ship personnel can also take advantage of the ship-shore rotations and expatriate assignment system to further their developments at sea and on land, and to look after their families.</p> <p>Ship personnel training: Seamen on shore waiting for their next assignment are sent for professional training at the center in accordance with the 2010 amendment of the STCW Convention (International Convention on Standards of Training, Certification and Watch-keeping for Seafarers). Additional company policy awareness, shipboard system operations and professional development courses are also administered by the ESTC based on mariners’ roles aboard the ship to keep them up to date on the latest navigational knowledge and techniques, boost their navigation and engineering expertise,</p>	

Evaluation Item	Implementation Status			Deviations from “the Corporate Social Responsibility Best-Practice Principles for TWSE/TPEX Listed Companies” and Reasons
	Yes	No	Abstract Illustration	
(5) Does the company formulate relevant consumer protection policies and appeal procedures according to relevant regulations and international standards in regards of the customer health, safety and privacy, and marketing and labeling of the products and services?	✓		<p>strengthen their identification with the Company’s management system, as well as enhance mariners’ loyalty to the Company.</p> <p>Shore personnel training: Through on-job-training, departmental professional training and training courses provided by external organizations, staff members learn necessary skills for daily operation. Via “rotation schemes” between different functions, the Company also enhance shore personnel’s inter-departmental knowledge and teamwork spirit. For overseas talents, Evergreen Marine provide “expatriate assignment” to enhance employees’ international horizons and career development. The Company cut back classroom training courses and face-to face workshops due to the COVID-19 pandemic in 2021. Instead, the Company provided membership of a well-known digital learning platforms for employees’ self-learning. These online courses covered subjects of digital transformation, career and learning, communication and marketing, political and economic trends etc.</p> <p>The Company has established the “Evergreen Line Corporate Sustainable Policy” and related operating procedures. The global subsidiaries and agencies should abide by the commitments of anti-bribery, anti-corruption and anti-discrimination in their business activities, strive to avoid pollution and improve marine environment. The Company has a competition law compliance manual that complies with the competition law, and is committed to complying with global competition laws and will never engage in any acts which violates violation the competition law.</p>	None

Evaluation Item	Implementation Status			Deviations from “the Corporate Social Responsibility Best-Practice Principles for TWSE/TPEX Listed Companies” and Reasons
	Yes	No	Abstract Illustration	
(6) Does the company formulate a supplier management policy that requires suppliers to follow relevant norms and the implementation status in issues such as environmental protection, occupational safety and health, or labor rights, etc.?	✓		<p>The company has established the “Supplier Code of Conduct”, which establishes the regulations that suppliers should comply when conducting business with us, and the same is published on the company’s website. Suppliers’ compliance with this Code will be taken into consideration for company’s procurement decisions. “Supplier Code of Conduct” consists of five parts: labor standards, health and safety standards, environmental standards, ethics and management system standards.</p> <p>The company had also created the “Supplier Evaluation Procedures” to evaluate at least once a year for qualified suppliers who provide with goods and services and will affect our service quality.</p> <p>For enhancing Supply Chain Sustainability management, Environmental protection, Social care and Governance are included into current criteria for choosing suppliers. Suppliers are required to sign “EMC Supplier Social Responsibility Compliance Commitment”, “Evergreen Supply Chain Sustainability Assessment Questionnaire” will also be issued to suppliers. ESG related clauses are encouraged to be included into contracts.</p> <p>We set up several supplier management KPI in 2021, they are “recovery rate of EMC Supplier Social Responsibility Compliance Commitment”, “ESG clauses contract inclusion rate” and “First tier supplier’s Supply Chain Sustainability Assessment Questionnaire return rate”, in order to understand how suppliers perform and fulfill sustainability development responsibilities with suppliers together.</p>	None

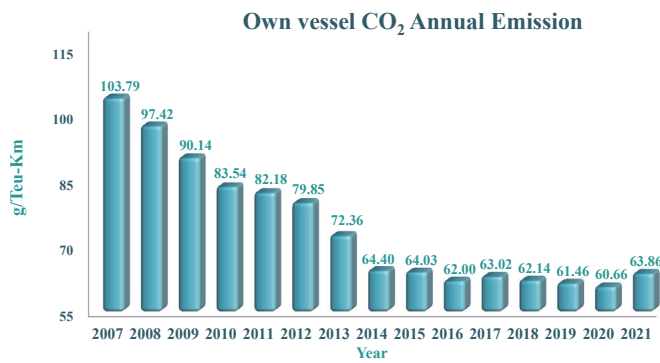
Evaluation Item	Implementation Status			Deviations from “the Corporate Social Responsibility Best-Practice Principles for TWSE/TPEX Listed Companies” and Reasons
	Yes	No	Abstract Illustration	
5. Does the company refer to international reporting rules or guidelines to prepare Corporate Sustainable report and other reports that disclose non-financial information of the company? Has the said Report acquired statement of assurance from the 3rd party verification unit?	✓		<p>The editorial structure of Evergreen’s Corporate Sustainable report adheres to the “Core” options of the Global Reporting Initiative Standards (GRI Standards).</p> <p>The company’s 2020 Corporate Social Responsibility Report has been conducted assurance by CPA in accordance with Stat Assurance Engagements Standards No.1 of Accounting Research and Development Foundation R.O.C. “Assurance Engagements other than Audits or Reviews of Historical Financial Information”. 2021 Corporate Sustainable Report will be done in same method.</p>	None
6. If the company has established the corporate social responsibility principles based on “the Corporate Sustainable Development Best-Practice Principles for TWSE/TPEX Listed Companies”, please describe any discrepancy between the Principles and their implementation: The Company has formulated the “Evergreen Marine Corporate Sustainable Development Best Practice Principles” and “Evergreen Marine Corporate Sustainability Committee Organizational Charter” and operates in accordance with these code of practice thus no occurrence of the discrepancy.				
7. Other important information to facilitate better understanding of the company’s corporate social responsibility practices: The Company has committed to promoting social welfare, participating in navigation lectures, sponsoring art activities and charities, and cooperated with maritime colleges continuously to cultivate maritime talents. The company attaches importance to local care and social feedback. (1) Environmental Protection The company implements the environmental protection concept in its fleet planning, adopts the most advanced shipbuilding technology and equipment, and builds an environmental protection fleet to contribute to the sustainable development of transportation services and the marine environment that international trade relies on. The company continues to adhere to the use of the latest technology to build new ships to achieve performance and the concept of environmental protection. All environmental protection designs can be comply with relevant international regulations, such as preventing marine oil pollution (the installation of double-shell built-in oil tanks can effectively reduce the risk of oil leakage), air pollution and climate change (the Montreal, Kyoto, and Paris agreements to reduce GWP, ODP, SOx, NOx emissions), biodiversity (pressure tank water treatment) and other issues.				

Evaluation Item	Implementation Status			Deviations from “the Corporate Social Responsibility Best-Practice Principles for TWSE/TPEX Listed Companies” and Reasons
	Yes	No	Abstract Illustration	

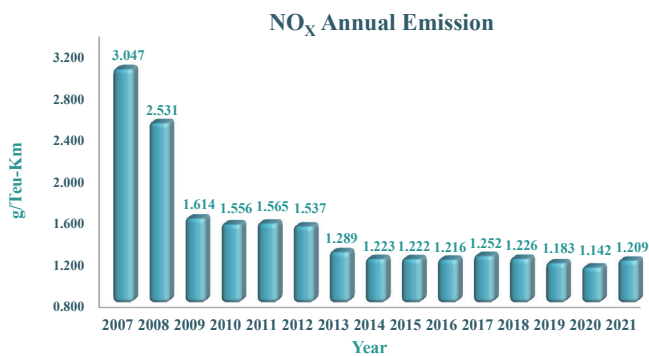
Both the newly built Type A and Type F ships can improve energy efficiency, reduce greenhouse gas emissions, NOx, SOx emissions etc. In the new ship construction plan, the ship structure of the fleet will be further optimized. This series of ships adopts long-stroke main engine, optimized The ship type and bow are equipped with Hybrid type SOx scrubber. This type of ship will significantly reduce carbon emissions. We has also obtained ISO 14001:2015 environmental protection certification. We implements the environmental protection management system in a responsible manner, and eliminates environmental risks. We has set up an “Environmental Protection Zone” on its official website. In addition to introducing the company’s various environmental protection measures, it also publishes annual environmental protection-related data.

* Historical environmental data

■ CO₂

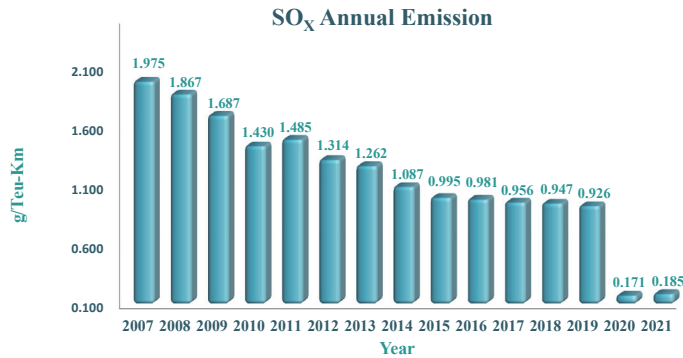


■ NOx



Evaluation Item	Implementation Status			Deviations from “the Corporate Social Responsibility Best-Practice Principles for TWSE/TPEX Listed Companies” and Reasons
	Yes	No	Abstract Illustration	

■ SOx



Note: The greenhouse gas emission information of the Company is verified by Class NK.

(2) Evergreen Marine contributed to Society in 2021:

1. Earth Day 2021, Evergreen loves the Earth

Caring for the earth and protecting the environment has always been Evergreen’s commitment. In response to the 422 World Earth Day and to express our care for the earth with practical actions, Evergreen invited colleagues to promote a ‘green life’ and take part in energy saving, carbon reduction and low-carb diets activities together for Earth Day.

2. Evergreen sponsored the 9th Legend of Ships Painting Competition

This is the fifth time that Evergreen sponsored the Legend of Ships Painting Competition organized by Chang Yung-fa Foundation’s Evergreen Maritime Museum, and it’s the first time to promote the issue of environmental sustainability with the theme of “Marine Environmental Protection”. Judging from the nearly 700 paintings this time, we could see children are familiar to environmental sustainability issues, which is gratifying!

3. Evergreen sponsors the Evergreen Symphony Orchestra

Evergreen sponsored the Evergreen Symphony Orchestra on five “Classical Music Banquet” concerts in 2021, with a total of 2,288 concert tickets provided not only for the Company’s employees and their families for free, but also for social welfare groups and volunteer friends. Hoping that through the music, everyone can relieve their stress.

4. Evergreen organizes beach cleaning activities

Evergreen Marine Kaohsiung Terminal Division’s beach cleaning activity at Shanwei Harbor in Linyuan District on October 16 was organized in association with The Society of Wilderness. Evergreen’s employees and their families responded to the beach cleaning activity, and collected around 167 kgs of various types of garbage. With the assistance of the Wilderness Conservation Association, the cleaning results were classified and recorded. Through this activity, all colleagues can deeply understand that protecting the environment is an urgent matter, and we should start from reducing plastics in daily life, so that environmental protection can be more implemented.

Evaluation Item	Implementation Status			Deviations from “the Corporate Social Responsibility Best-Practice Principles for TWSE/TPEX Listed Companies” and Reasons
	Yes	No	Abstract Illustration	
5. Planting activities of Evergreen				
<p>To illustrate Evergreen’s determination to address issues of environmental protection, Chairman Chang and the Deputy Senior Vice President, Mr. Huang led 132 employees and their families who participated in Planting Activities at “Jiabao Beach” in northern Taiwan and “Dapingding” in Kaohsiung on September 30 and also on December 4 this year. Both the passion and enthusiasm of all participants were on display as 400 tree saplings with a total area of 11,000 square meters were planted, achieving some marvelous results for “Green Earth”. Evergreen is committed to all kinds of environmental protection activities through social engagement, and to making more efforts to protect our earth.</p>				
6. Evergreen donates computers				
<p>Evergreen has worked with the Chang Yung-Fa Foundation to various public welfare activities, and are committed to helping to bridge the gap between urban and rural areas, hoping to open different learning windows for children in remote areas. Evergreen donated 120 sets of used computers to rural elementary schools in Daxi District and Luzhu District, Taoyuan City on November 30, in order to assist primary schools in rural areas to improve teaching effectiveness through digital online learning platforms.</p>				
7. Evergreen donates furniture				
<p>Evergreen Marine worked with the Chang Yung-Fa Foundation to make a donation of two new storage cabinets as well as 30 used chairs to the charity group, Grown-up With Hands Family and arranged for an employee to become Santa Claus for the day to deliver gifts to children.</p>				
8. Evergreen sponsors Christmas dinner				
<p>On December 18, 2011, Evergreen also worked with the Chang Yung-Fa Foundation to send love to St. Teresa Children Center, and served Christmas dinner which had been provided by Evergreen Sky Catering Corporation to enjoy Christmas Day with the kids. The Evergreen Symphony Orchestra’s String Quartet also went along to perform Christmas songs at the Christmas party. Audiences enjoyed the evening very much and really appreciated Evergreen’s special efforts.</p>				

Table1 The structure of corporate sustainability committee

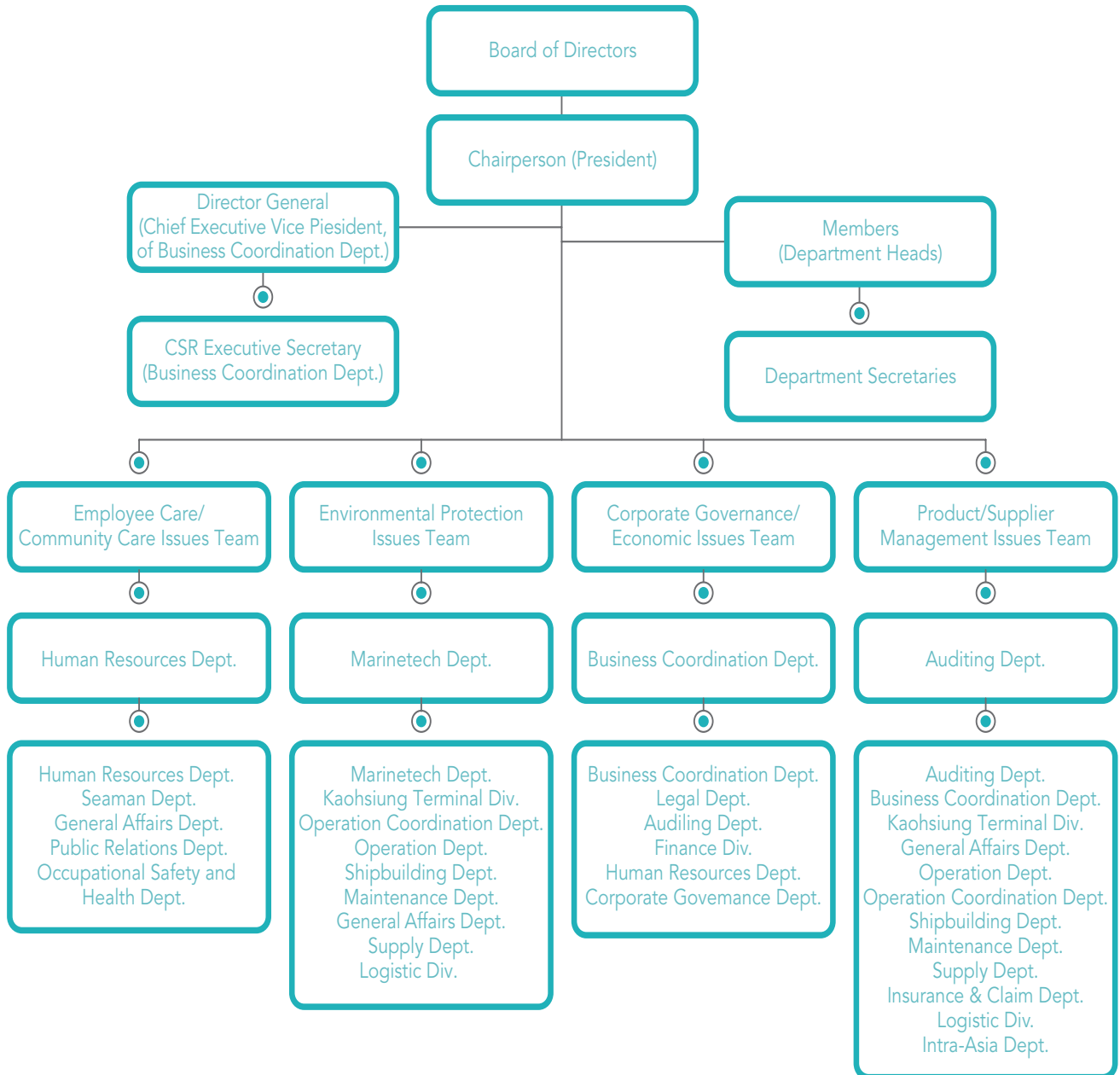


Table2 Risk assessment and management policy

The company conducts risk identification and assessment of important issues on the basis of the Materiality Principle for corporate sustainability development, and formulates relevant risk management policies, strategies and corresponding countermeasures for the assessed risks:

Important issues	Risk assessment	Risk management policies and strategies
Environmental	Environmental protection and ecological conservation	<p>Evergreen endeavors to enforce all possible protective measures that contribute to the improvement of terrestrial and marine environment, in order to provide sustainable marine transportation service and the related services. All Evergreen employees and management, both onshore and offshore operations, are required to strictly comply with international and regional environmental protection laws and regulations. The company also develops state-of-the-art technology and installs scrubber to help safeguarding the marine ecology, port safety and happiness of mankind with all efforts. In order to effectively reduce environmental impact, the Company has developed an execution plan and targets, which are regularly tracked and reviewed.</p>
Social	Occupational safety	<p>The company is certified by ISO 45001 for Occupational Safety and Health Management System. In addition, Evergreen Marine has formulated "Occupational Safety and Health Management Plan" in order to implement safety and health management and self inspection. The plan is also used for managing the working areas and personnel, and the Company has appointed dedicated personnel to be in charge of the safety and health management and supervision affairs. In accordance with occupational safety and health related regulations and operational requirements, the Company also organized occupational safety, including dangerous goods training, fire prevention manager training, fire drill training (evacuation of personnel), brief introduction of relevant regulations on operational safety and health, operational management, self inspection before, during, and after the operation, emergency response, etc.</p>
	Cargo Safety	<p>The transport of goods by sea is a part of international trade. The regulations of the International Maritime Dangerous Goods Code (IMDG Code) require dangerous goods to be properly labeled (with label which conforms to the specification) for transport to serve as a warning and to make them easy to be identified. Evergreen Marine has therefore offered dangerous good placards which are in full compliance with the size and quality of the IMDG specification. These placards serve as a clear indication of dangerous goods among all other goods in the container during the transportation process. The company's dangerous goods team is composed of talents with professional background and having the goods checked at all levels, it enables to prevent the occurrence of concealing and misreporting of dangerous goods.</p>

Important issues	Risk assessment	Risk management policies and strategies
Corporate Governance	Socioeconomic and regulatory compliance	<p>1. The company has established a corporate governance team and internal control mechanism for relevant departments to manage risks for exchange rate, interest rate, credit, liquidity, excessive market concentration, international political and economic, epidemic, sanctions, hackers, viruses and other invasions, abnormal climate, and sharp fluctuations in fuel prices, terminal strikes, delays in ships and docking, and poor quality for delivery, etc., Through risks identification, a proper corresponding countermeasures has been set up for minimizing the impact of risks.</p> <p>2. As a globally reputable container shipping company, Evergreen Marine insists on conducting its business in a lawful, transparent and ethical manner and is committed to complying with global competition law, anti-bribery and anti-corruption law, privacy law and economic sanctions regulations. As such, the company has established regulatory compliance policies and guidelines to facilitate compliance, and supervises it so as to prevent illegal activities from happening.</p>

Table3 Statistics of greenhouse gas emissions, water consumption and waste disposal in recent years

• Statistics of greenhouse gas emissions from Evergreen self-owned vessels in the past 3 years

	2019	2020	2021
Fleet CO ₂ emissions (ton CO ₂ e)	5,903,899	5,798,134	6,661,895
Fleet CO ₂ emission rate (g/TEU-KM)	61.46	60.66	63.86

Note 1: Scope 1 (direct) GHG emissions only cover CO₂ emissions.

Note 2: GHG inventory is based on GHG emissions = Energy consumption and GHG emission factor; The GHG emission factor is based on the values given in IMO MEPC.308(73) and the GHG emission factor management table 6.0.4 edition issued by the MOEA Industrial Development Bureau (IPCC 5th Evaluation Report); GHG emission total was calculated using the operational control method.

Note 3: In 2021, due to the impact of the epidemic, the global port congestion problem was serious, and the ship punctuality rate dropped sharply. In order to stabilize the smooth global supply chain and protect the rights and interests of customers, the company continued to invest in transportation capacity and increase the speed of ships to respond, resulting in an increase in the fleet's carbon dioxide emissions. The annual carbon emission increase of about 14.9% ,which is lower than the 16% of the total investment in new capacity.

- Statistics of greenhouse gas emissions from shore operations (Kaohsiung container terminal) in the past 3 years

	2019	2020	2021
Direct GHG emissions (ton CO ₂ e)	2,917.12	3,501.13	4,249.48
Indirect GHG emissions (ton CO ₂ e)	21,368.94	24,203.89	20,629.52
GHG emission intensity (ton CO ₂ e/load)	3.24	3.82	3.62

Note 1: Scope 1(direct) GHG emissions are calculated using the CO₂ equivalent generated by company vehicles. Scope 2(indirect) GHG emissions are calculated using the CO₂ equivalent generated by electricity used for yard equipment and reefer container. in the office building. GHG emissions are summarized using the operational control method.

Note 2: Estimation method and source of factor: Energy emission = Energy consumption * GHG emission factor; the GHG emission factor is based on the GHG emission factor management table 6.0.4 edition issued by the MOEA Industrial Development Bureau (IPCC 5th Evaluation Report, June 2019) .

Note 3: Work load refers to the number of containers handled by cranes (diesel or electric-powered).

Note 4: In 2021, the operation of the company's Kaohsiung container terminal was also affected by the global port congestion problem. The situation of container retention intensified, resulting in a decrease in the turnover rate of equipment in the factory area. Therefore, it was necessary to set up another storage area for operations, the company strengthened operations. Management, energy conservation and carbon reduction were implemented, and the total carbon dioxide emissions throughout the year were still lower than the previous year.

- Statistics of greenhouse gas emissions from office building in the past 3 years

	2019	2020	2021
Direct GHG emissions (ton CO ₂ e)	16.32	14.58	12.42
Indirect GHG emissions (ton CO ₂ e)	3,264.94	3,057.36	3,004.36
GHG emission intensity (ton CO ₂ e/M ²)	0.12	0.11	0.11

Note 1: Scope 1(direct) GHG emissions are calculated using the CO₂ equivalent generated by company vehicles. Scope 2 (indirect) GHG emissions are calculated using the CO₂ equivalent generated by electricity used in the office building. Indirect GHG emissions are calculated using the site-based method. GHG emissions are summarized using the

operational control method.

Note 2: Estimation method and source of factor: Energy emission = Energy consumption * GHG emission factor. Source of Direct GHG emissions: The GHG emission factor is based on the GHG emission factor management table 6.0.4 edition (IPCC 5th Evaluation Report, June 2019).

Note 3: GHG emission intensity = Carbon emission of externally purchased electricity/Total building floor area, 28,036.4 M².

• Statistics of water consumption from Evergreen in the past 3 years

Operation		Item	Unit	2019	2020	2021
Ships at sea		Fresh water supply to the ship	ton	88,643	81,679	92,252
Shore operations	Kaohsiung Terminal	Annual tap water consumption	liter	25,377	25,824	22,845
		Sewage treatment volume	CMD	7,968	7,328	6,823
	Evergreen Marine office	Annual tap water consumption	liter	25,006	25,528	23,354

Note 1: Fresh water supply to the ship is based on the quantities requested by each ship.

Note 2: Fresh water supply to shore operations is based on the actual quantity on the meter

Note 3: In 2021, the global freight market was seriously affected by the problem of port congestion. Fresh water supply increased due to longer ship demurrage.

• Statistics of waste disposal from Evergreen in the past 2 years

Operation		Item	Disposal method	Unit	2020	2021
Ships at sea		Incinerator ashes	Recycling	m ³	47.94	58.20
		Waste oil	Recycling	m ³	38,603	40,345
Shore operations	Kaohsiung Terminal	Domestic waste	Incineration	Ton	200.11	186.65
		Waste hardware & waste paper	Recycling	Ton	204.64	218.64
	Evergreen Marine office building	Domestic waste	Incineration	Ton	70.66	44.52
		Recycling	Recycling	Kilogram	5,600	2,520

Note 1: In 2021, due to the increase in the overall operation scale, the amount of waste disposed of on board also increased compared with previous years.

Note 2: In 2021, the operation of the company's Kaohsiung Container Terminal was affected by the port congestion and container detention, which increased the use of operating equipments, and in order to achieve the efficiency of resource recycling and renewable energy use, the disposal of related waste hardware increased.