

Corporate Social Responsibility and Deviations from “the Corporate Social Responsibility Best-Practice Principles for TWSE/TPEX Listed Companies” and Reasons

Evaluation Item	Implementation Status			Deviations from “the Corporate Social Responsibility Best-Practice Principles for TWSE/TPEX Listed Companies” and Reasons
	Yes	No	Abstract Illustration	
1. Does the company conduct a risk assessment of environmental, social and corporate governance issues, which is related to the company’s operations, and formulate relevant risk management policies or strategies by Materiality Principle?	✓		In response to the impact of financial and economic shock, terrorism and climate change, the Company has aggressively identified risk factors such as strategic and operational risks, market risks, legal risks, financial risks(including exchange rates, interest rates, prices, credit and volatility risks) and ship safety risks; and formulated the management policies and countermeasures accordingly. Recently, in view of the increasingly severe climate change, the Company refers to the framework of Task Force on Climate-related Financial Disclosure (TCFD) to identify the opportunities and challenges brought by climate change and extreme climate. Climate change impact that affected operations has been further integrated into the Company’s risk assessment system and corresponding measures has also been adopted.	None
2. Does the company establish exclusively (or concurrently) dedicated unit to promote corporate social responsibilities, with first-line managers authorized by the Board to be in charge of its management and report to the Board regarding the management status?	✓		The Evergreen Marine CSR Committee is the dedicated unit for promoting CSR to ensure the continued implementation of sustainable corporate management practices. The CSR Committee is responsible for the formulation, implementation and review of CSR policies, system or the related management guidelines. The President serves as the Chairperson of the Committee while the members of the Committee are made up of the heads of each department. The relevant	None

Evaluation Item	Implementation Status			Deviations from “the Corporate Social Responsibility Best-Practice Principles for TWSE/TPEX Listed Companies” and Reasons
	Yes	No	Abstract Illustration	
			<p>departments are responsible for communicating and responding to stakeholders on the issues concerned including economic, environmental and social issues. Members of the Committee meet as necessary to discuss economic, environmental, and social issues, implementation outcome and prepare and review the content of the CSR report. The CSR Committee reports its implementation progress and work plans to the Board of Directors once a year. The implementation of CSR is an integral part of the Company's decision-making process. Please refer to note 1 for the structure of the CSR committee.</p>	
<p>3. Environment Issue</p> <p>(1) Does the company establish proper environmental management systems based on the characteristics of their industries?</p>	✓		<p>The Company has a risk management mechanism to provide a safe and healthy working environment for all staff in Evergreen.</p> <p>Evergreen's fleet management system is certified by the American Bureau of Shipping(ABS) for comprehensive auditing at the level of safety and environmental management, and is issued a “two-in-one certificate” of “Company Compliance on Marine Safety & Environmental Management”. Evergreen meets the requirements of the three international standards of International Safety Management (ISM) Code, ISO9001 Quality Management System and ISO14001 Environmental Management System in onshore logistics management and maritime operations.</p>	None

Evaluation Item	Implementation Status			Deviations from “the Corporate Social Responsibility Best-Practice Principles for TWSE/TPEX Listed Companies” and Reasons
	Yes	No	Abstract Illustration	
(2) Does the company endeavor to utilize all resources more efficiently and use renewable materials which have low impact on the environment?	✓		<p>The Company is cautiously abiding by international environmental protection conventions and environmental protection regulations in various regions, and is committed to pollution prevention, energy conservation and greenhouse gas reduction, and planetary protection. Strict standards and operating procedures are set for the environmental protection and pollution prevention for ships sailing at sea. The Company uses various operational management measures, emission reduction strategies and ship design optimization to reduce ship energy consumption, and continuously introduces a new generation of eco-friendly ships to reduce pollution and greenhouse gas emissions, in order to contribute to the environmental protection of the earth.</p> <p>The building of Evergreen Marine adheres to an energy-saving policy, in order to achieve energy-saving goals and eliminate energy waste, in addition to large-scale air-conditioning system using energy-efficient motors, the office lighting part has been completely changed to LED energy-saving lamps, so as to control high energy consumption and long-time use of equipment through active management. In addition, if the refrigerator is broken, we will replace it with the energy-efficient refrigerator. When an official vehicle is to be replaced, a vehicle with less fuel consumption will be purchased.</p> <p>Over 50% of the chassis at Evergreen</p>	None

Evaluation Item	Implementation Status			Deviations from “the Corporate Social Responsibility Best-Practice Principles for TWSE/TPEX Listed Companies” and Reasons
	Yes	No	Abstract Illustration	
(3) Does the company assess the potential risks and opportunities of climate change for the company and take measures to respond to climate-related issues?	✓		<p>Kaohsiung Container Terminal have now been upgraded with all-rubber tires. We expect all dock-side chassis to be fitted with all-rubber tires in the future, a move that will reduce the complexity of recycling and associated environmental pollution.</p> <p>In view of the increasingly severe climate change, Evergreen refers to the framework of Task Force on Climate-related Financial Disclosure (TCFD) to identify the opportunities and challenges brought by climate change and extreme climate. The climate change impact that affected operations, such as severe sea conditions, typhoons, sea fog, sea ice and extremely low atmospheric pressure, has further been incorporated into risk assessment systems and corresponding measures has also been adopted.</p> <p>The global extreme weather and climate events are the challenge we must face. For the Evergreen fleet, the severe weather is the most serious climate change which poses a huge threat to the safety of ships on the sea. Taking into account the safety of the fleet, Evergreen seeks long-term cooperation with Japan’s Weathernews Inc.(WNI) to provide the worldwide 3 major marine weather forecasting and consulting services, so that ships sailing around the world can obtain the weather information of local waters as soon as possible, in order to take appropriate navigation plans and ensure safe navigation.</p>	None

Evaluation Item	Implementation Status			Deviations from “the Corporate Social Responsibility Best-Practice Principles for TWSE/TPEX Listed Companies” and Reasons
	Yes	No	Abstract Illustration	
(4) Does the company summarize greenhouse gas emissions, water consumption and total weight of waste in the past two years and formulate policies for energy conservation, carbon reduction, greenhouse gas reduction, water use reduction or other waste management simultaneously?	✓		<p>Evergreen Marine conducts comprehensive management of greenhouse gas emissions, water resource and waste treatment in accordance with the three major aspects of ships at sea, shore operations, office buildings in order to monitor, review and implement relative reduction programs.</p> <p>Evergreen monitors the fuel consumption and host operating status of each ship of the fleet in time every day, to ensure the propulsion performance of the main engine. Each vessel also feeds back the total fuel consumption and total navigation distance of the month to the ship management unit at the end of each month. The information reported is used to calculate the CO₂ emissions, so as to monitor the greenhouse gas emissions of the entire fleet and achieve the fleet’s carbon reduction targets.</p> <p>The Company currently takes the following measures to reduce CO₂ emissions:</p> <ol style="list-style-type: none"> 1. Slow down the speed of the ship and sail at a low speed. 2. Continuous monitoring of ship fuel consumption and host operating status to ensure the propulsion performance of the main engine. 3. Use the weather navigation to provide the fleet with real-time weather information, in order to select the best route for maximum fuel efficiency. 4. Improve cargo handling efficiency to shorten port stays. 5. Proper planning of cargo load to 	None

Evaluation Item	Implementation Status			Deviations from “the Corporate Social Responsibility Best-Practice Principles for TWSE/TPEX Listed Companies” and Reasons
	Yes	No	Abstract Illustration	
			<p>maximize economic returns.</p> <p>6. Application of special anti-fouling paint to ship hulls</p> <p>7. Replacement of old vessels</p> <p>IMO statistics indicated that CO₂ emissions from the shipping industry accounted for 2.8% of all primary global greenhouse gas emissions. If left unchecked, this ratio may grow to 15% by 2050. In response to global trends, green shipping is now being developed by Evergreen Marine and CO₂ reduction targets have been set. The mid-term target of 40% reduction in CO₂ emissions by 2030 is planned with 2008 as the baseline; the long-term target is to reduce the emission rate by 70% in 2050. According to the statistics of CO₂ emissions in 2019, a reduction of 36.9% has been achieved.</p> <p>The relative statistics in for greenhouse gas emissions, water consumption and waste management in recent years are shown in note 3.</p>	
<p>4. Social Issue</p> <p>(1) Does the company formulate appropriate management policies and procedures according to relevant regulations and the International Bill of Human Rights?</p>	✓		<p>The Company takes its social responsibility very seriously as a leader in the global container shipping industry. Our CSR policy applies to all branches and agencies around the world. We are committed to conforming to policies and regulations on anti-bribery/anti-corruption, anti-discrimination, environmental protection, fair risk assessment and risk control, and competition law compliance (http://www.evergreen-line.com/tw/static/jsp/csr.jsp).</p>	None

Evaluation Item	Implementation Status			Deviations from “the Corporate Social Responsibility Best-Practice Principles for TWSE/TPEX Listed Companies” and Reasons
	Yes	No	Abstract Illustration	
			<p>Evergreen Marine adheres to the local labor and gender equality in employment laws of our global operating sites. We also support international guidelines and principles relating to human rights, including the “UN Universal Declaration of Human Rights (UDHR),” and the core labor standard of the ILO(International Labor Organization) Fundamental Conventions; prohibit all forms of discrimination, bullying and harassment, forced labor and child labor, and guarantee the freedom of association for employees. On Evergreen ships, all crew members, whether they are from Taiwan, China, the Philippines, Vietnam or Indonesia, embrace the spirit of fellowship in respecting and tolerating each other’s religious beliefs and dietary traditions, and get along harmoniously and happily with others at work. In 2019, there were no complaints of racial, religious, or gender discrimination, forced labor and any violation of indigenous rights in the workplace. According to the Labor Standards Act, anyone over the age of 15 and under 16 is considered a child labor, and employers are not allowed to employ anyone under the age of 15 to engage in labor work; seafarers recruiting guidelines also conform to the Seafarer Act in requiring all applicants to be 16 years old or above. In compliance with the relevant laws and regulations, the Company has never employed any child labor and has specified in the management rules</p>	

Evaluation Item	Implementation Status			Deviations from “the Corporate Social Responsibility Best-Practice Principles for TWSE/TPEX Listed Companies” and Reasons
	Yes	No	Abstract Illustration	
(2) Does the company set and implement reasonable employee welfare measures(including compensation, leave and fringe benefits) and reflect the operating performance or results on employees compensation?	✓		<p>that the admission of anyone under 15 years of age is prohibited. By the end of 2019, all Evergreen Marine on-shore personnel were over the age of 18 while seafarers were over 16.</p> <p>To attract and retain quality talent as well as strengthen our global operations team, the Company provides onshore and ship personnel with competitive salary and fringe benefits. Our compensation and benefits policy adheres to the relevant labor laws and regulations and comply with the requirements of the collective agreement of seafarers. The compensation packages do not differ on the basis of gender, religion, race or political bias. In addition, annual bonuses are also paid to employees based on the Company’s profitability and individual performance of the year as a reward for their outstanding performance. Compensation for local and foreign crew members not only meets the minimum wage standards set by Ministry of Transportation and Communications, R.O.C. (MOTC) and the wage requirements set forth in the collective agreement of International Transport Workers’ Federation (ITF), but the Company also recruits excellent personnel to join the fleet with the wages higher than the domestic and foreign market pay.</p>	None

Evaluation Item	Implementation Status			Deviations from “the Corporate Social Responsibility Best-Practice Principles for TWSE/TPEX Listed Companies” and Reasons
	Yes	No	Abstract Illustration	
(3) Does the company provide a healthy and safe working environment and organize training on health and safety for its employees on a regular basis?	✓		<p>The Company has established an Occupational Safety and Health Management Department, which is responsible for formulating, planning, and promoting occupational safety and health related affairs, so as to eliminate hazards and reduce occupational safety and health risks. The relevant preventive measures are as follows:</p> <ol style="list-style-type: none"> 1. Establish codes of practice in safety and health based on the size of the Company according to the Occupational Safety and Health Act, publish it and require employees to comply with it. 2. Conduct education and training on safety and health for new and current employees in accordance with the Occupational Safety and Health Act. 3. Conduct education and training on fire safety for employees in accordance with the provisions of the Fire Services Act. 4. Provide and arrange regular health examinations and medical consultations for employees. 5. Establish a 24-hour security force and implement round-the-clock access control for personnel to ensure the safety of Company property and personnel. 	None
(4) Does the company provide its employees with effective career development training programs?	✓		<p>The Company has always embraced the philosophy that “talents are the most important assets of an enterprise” and thus provide colleagues with complete training. We offer equal</p>	None

Evaluation Item	Implementation Status			Deviations from “the Corporate Social Responsibility Best-Practice Principles for TWSE/TPEX Listed Companies” and Reasons
	Yes	No	Abstract Illustration	
			<p>work opportunities to fresh graduates and patiently teach ambitious youth everything from scratch. Current employees are provided with a range of solid professional training courses. With the continuous investment in education and training in recent years, more than 7.7 million was invested in 2019.</p> <p>In addition to offering competitive compensation and complete training to employees, the Company also enhances operating performance by training employees on their professional functions and international perspective through “rotation and expatriate assignment”. The pioneering “ship-shore rotation system” of Evergreen also provides seafarers with the opportunity to work on shore. The professional knowledge of outstanding seafarers helps to ensure that the ship scheduling, freight space allocation, terminal loading/unloading and ship maintenance of onshore logistics to meet the needs of offshore operations; the overall efficiency of the service chain can then be improved. Seafarers can also take advantage of the ship-shore rotation system and expatriate assignment system to further their onshore and offshore developments, as well as to balance their work and family. Through job swapping program, ships can tacitly cooperate with the shore and the management function is strengthened.</p>	

Evaluation Item	Implementation Status			Deviations from “the Corporate Social Responsibility Best-Practice Principles for TWSE/TPEX Listed Companies” and Reasons
	Yes	No	Abstract Illustration	
(5) Does the company formulate relevant consumer protection policies and appeal procedures according to relevant regulations and international standards in regards of the customer health, safety and privacy, and marketing and labeling of the products and services?	✓		The Company has established the “Evergreen Line Corporate Social Responsibility Policy” and related operating procedures. The global subsidiaries and agencies should abide by the commitments of anti-bribery, anti-corruption and anti-discrimination in their business activities, strive to avoid pollution and improve marine environment. The Company has a competition law compliance manual that complies with the competition law, and is committed to complying with global competition laws and will never engage in any acts which violates violation the competition law.	None
(6) Does the company formulate a supplier management policy that requires suppliers to follow relevant norms and the implementation status in issues such as environmental protection, occupational safety and health, or labor rights, etc.?	✓		The Company has “Supplier Code of Conduct” which establishes the norms that should be followed by suppliers in their business cooperation with the Company, and it was published on the Company’s website. Supplier’s compliance with this code will be taken into account in the Company’s purchasing decisions. The Company’s “Supplier Code of Conduct” consists of 5 parts: labor code, health and safety code, environmental code, moral code and management system standards. Furthermore, the Company has “Supplier Evaluation Procedures” to evaluate at least once a year for qualified suppliers who provide goods and services that will affect our service quality. In addition, in order to fulfill the social responsibilities together with suppliers, the Company conducted	None

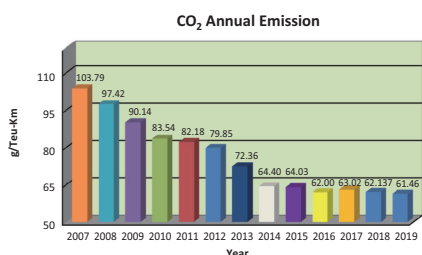
Evaluation Item	Implementation Status			Deviations from “the Corporate Social Responsibility Best-Practice Principles for TWSE/TPEX Listed Companies” and Reasons
	Yes	No	Abstract Illustration	
			<p>surveys and evaluations in 2019 on major suppliers’ environmental issues, labor practices and human rights, fair trade practices, and sustainable procurement. The survey results also serve as a reference for the Company’s choice of suppliers.</p> <p>Additionally, before engaging a supplier, the Company also assesses whether the supplier has any record of environmental and social impact; avoids trading with those who are in conflict with corporate social responsibility policies, and strive to jointly comply with the relevant regulations on environmental protection, safety and health issues with suppliers.</p>	
5. Does the company refer to international reporting rules or guidelines to prepare CSR report and other reports that disclose non-financial information of the company? Has the said Report acquired statement of assurance from the 3rd party verification unit?	✓		The Company’s 2019 Corporate Social Responsibility Report will be conducted assurance by CPA in accordance with Stat Assurance Engagements Standards No.1 of Accounting Research and Development Foundation R.O.C. “Assurance Engagements other than Audits or Reviews of Historical Financial Information”.	None
6. If the company has established the corporate social responsibility principles based on “the Corporate Social Responsibility Best-Practice Principles for TWSE/TPEX Listed Companies”, please describe any discrepancy between the Principles and their implementation: The Company has formulated the “Evergreen Line Corporate Social Responsibility Code” and the “ Evergreen Line Corporate Social Responsibility Implementation Measures” and operates in accordance with these code of practice thus no occurrence of the discrepancy.				
7. Other important information to facilitate better understanding of the company’s corporate social responsibility practices: (1) Environmental Protection The company implements the environmental protection concept in its fleet planning, adopts the most advanced				

Evaluation Item	Implementation Status			Deviations from “the Corporate Social Responsibility Best-Practice Principles for TWSE/TPEX Listed Companies” and Reasons
	Yes	No	Abstract Illustration	

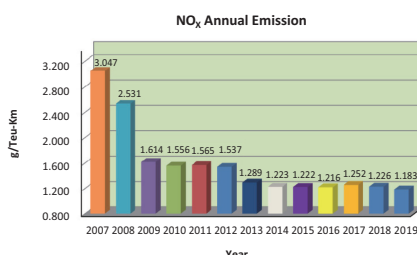
shipbuilding technology and equipment, and builds an environmental protection fleet to contribute to the sustainable development of transportation services and the marine environment that international trade relies on. In August 2015, the Company ordered ten new 2,800 TEU “B” container vessels from CSBC Taiwan. The ten B-type ships under construction with CSBC Taiwan are equipped with the latest sword bow developed by the shipyard. The bow can handle different drafts and speeds while effectively reducing wave resistance and drag when the ship is in motion to optimize ship speed and engine performance. Fuel efficiency is improved by 10% compared to the conventional bulbous bow. The main engine uses an electronic control engine that complies with the International Maritime Organization (IMO) Level 2 NOx emission standards, which reduces NOx emissions by 20%. The ship is designed to meet the 2015 Energy Efficiency Design Index (EEDI) standards. In the management of ships, the waste, sewage, and exhaust emissions generated by ships are minimized through advanced soft and hard facilities. Standard operating procedures are adopted to monitor the emissions of sulfides and nitrides, and proper management of ballast water, sewage, and garbage to prevent oil pollution and refrigerant leakage. In addition to the above-mentioned control measures, the latest ship weather navigation system is also adopted to provide the safest and most fuel-efficient route to the individual general reference. The energy saving and carbon reduction can be achieved with a minimum of fuel consumption. Each ship is equipped with a ship's load stability calculation system approved by the Classification Society to quickly calculate the optimum trim, draft, weight and hull stress distribution under any load conditions. To ensure optimal driving efficiency in a safe and secure situation. Evergreen Line voluntarily participates in the Vessel Speed Reduction Program, lead by NOAA's Channel Islands National Marine Sanctuary. The practical action to avoid whale collisions and reduce greenhouse gas emissions of vessels has been honored with an environmental protection award. The “Environmental Guardians” page on our website was constantly maintained so as to proactively share our environmental protection measures and the related information of environmental protection.

* Historical environmental data

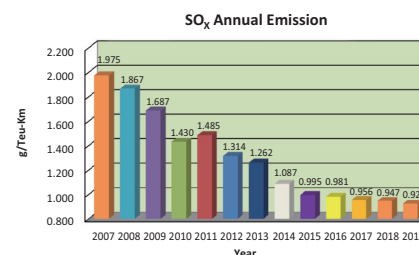
■ CO₂



■ NO_x



■ SO_x



Note: The greenhouse gas emission information of the Company in 2018 and 2019 is verified by Class NK.

(2) Contributions to Society

A. Sponsoring the 7th Taiwanese Elementary School Children's Ocean Painting Contest

For 3 years in a row, Evergreen Marine sponsored Evergreen Maritime Museum to hold the 7th Taiwanese

Evaluation Item	Implementation Status			Deviations from “the Corporate Social Responsibility Best-Practice Principles for TWSE/TPEX Listed Companies” and Reasons
	Yes	No	Abstract Illustration	

Elementary School Children’s Ocean Painting Contest. The contest was divided into high, middle and lower grade categories according to their age. The “Angels” category was also set up for students with physical and mental disabilities to submit entries through the recommendation of their school teachers. On June 1, 2019, a prize giving ceremony was held at the Chang Yung-fa Foundation, with Captain Yang, Hong-Ming being the award presenter. Many Evergreen Marine staff are invited to perform “Baby Shark Dance” to perk up the ambiance of the ceremony. Award-winning works were exhibited in the multi-functional space on the 3rd floor of the museum until the summer vacation.

B. Sponsoring Charity Summer Camp

Evergreen Marine and Evergreen Maritime Museum joined forces to organize a two-day Charity Summer Camp between August 15 to 16, 2019 and invited 30 elementary and junior high school students from underprivileged families to attend for free. In addition to the introduction of the maritime relics, Evergreen specially opened the Evergreen Seafarer Training Center (ESTC) at Nankan headquarter to demonstrate the knowledge of shipping such as the basic ship construction and simple first aid teaching to the students. Furthermore, students could witness the electronic navigational charts room, engine training control room, engine room simulator and other equipment.

C. Evergreen Marine and Overseas Affiliates Participate in Coastal Cleanup Activities

Evergreen called on its employees and their family members to organize 2 coastal cleanup activities in both the northern and southern part of Taiwan, as a way to contribute to society. Leading by senior executives, the northern one was held at Zhuwei Fishing Harbor in Taoyuan City; the one in the south was held at Zhongyun Fishing Harbor in Linyuan district of Kaohsiung City and was led by the the supervisor of Evergreen Kaohsiung Terminal Division.

Employees of Evergreen Marine (Singapore) Pte. Ltd., led by senior executive, participated in the coastal cleanup activity at Changi Beach organized by International Coastal Cleanup Singapore.

Employees from Mumbai, Chennai, Thoothukudi and Cochin offices of Evergreen Shipping Agency (India) Pvt. Ltd., led by senior executives, participated in the local coastal cleanup activity.

D. Maritime Career Lecture I given at Taipei Municipal Da-An Vocational High School

Evergreen Chief Engineer Chang, Engineman Second Class Chang, and Professor Yang from Department of Marine Engineering, National Kaohsiung University of Science and Technology, were invited to introduce the Evergreen culture, modern equipment of Evergreen ships and life on board, whereas Professor Yang introduced Marine Engineering courses, internship on board and the career development to 60 auto maintenance students at Taipei Municipal Da-An Vocational High School. The lecture received a very warm response from the students and they inquired about the application for Marine Engineering courses and the job scope of engineer working on board.

E. Maritime Career Lecture II given at Tou-Cheng Junior High School in Yilan County

Under the “Create your own Golden Voyage of Life” concept, the Chang-Yung Fa Foundation and Captain Chang, Engineman Second Class Chang, Engineman Thrid Class Lin from Evergreen Marine visited Tou-Cheng Junior High School in Yilan County to share their work and life navigation experience with about 340 students. The lectures was conducted in 2 sessions for 1st and 2nd grade students respectively who then had a better idea of what it is like to work at sea.

Evaluation Item	Implementation Status			Deviations from “the Corporate Social Responsibility Best-Practice Principles for TWSE/TPEX Listed Companies” and Reasons
	Yes	No	Abstract Illustration	

F. Assisting the funeral affairs for a drowned Taiwanese in the Maldives

On March 28, 2019, a Taiwanese woman drowned while diving in the Maldives. Evergreen Representative Lee, stationed in Colombo, Sri Lanka, received a request for assistance from Taipei Economic and Cultural Center in Chennai on March 30. After a week of negotiation, the Ministry of Health, Nutrition and Indigenous Medicine of Sri Lanka finally agreed to issue a quarantine certificate which enabled the woman’s body to be embalmed in the Maldives and was sent to Sri Lanka for autopsy and cremation; on April 6, the family members of the deceased collected the cremation urn and related documents at the funeral home. During this period, Evergreen Rep. Lee actively assisted the family members of the deceased to deal with the procedures and funeral arrangement, provided free accommodation, meals and transportation for the consular officer and the family members of the deceased and finally brought the incident to a successful conclusion.

Table1 Risk assessment and management policy

The company conducts risk identification and assessment of important issues on the basis of the Materiality Principle for corporate social responsibility, and formulates relevant risk management policies, strategies and corresponding countermeasures for the assessed risks:

Important issues	Risk assessment	Risk management policies and strategies
Environmental	Environmental protection and ecological conservation	Evergreen endeavors to enforce all possible protective measures that contribute to the improvement of terrestrial and marine environment, in order to provide sustainable marine transportation service and the related services. All Evergreen employees and management, both onshore and offshore operations, are required to strictly comply with international and regional environmental protection laws and regulations. The company also develops state-of the-art technology and installs scrubber to help safeguarding the marine ecology, port safety and happiness of mankind with all efforts. In order to effectively reduce environmental impact, the Company has developed an execution plan and targets, which are regularly tracked and reviewed.

Important issues	Risk assessment	Risk management policies and strategies
Social	Occupational safety	<p>The company is certified by ISO 45001 for Occupational Safety and Health Management System. In addition, Evergreen Marine has formulated “Occupational Safety and Health Management Plan” in order to implement safety and health management and self inspection. The plan is also used for managing the working areas and personnel, and the Company has appointed dedicated personnel to be in charge of the safety and health management and supervision affairs. In accordance with occupational safety and health related regulations and operational requirements, the Company also organized occupational safety, including dangerous goods training, fire prevention manager training, fire drill training (evacuation of personnel), brief introduction of relevant regulations on operational safety and health, operational management, self inspection before, during, and after the operation, emergency response, etc.</p>
	Cargo Safety	<p>The transport of goods by sea is a part of international trade. The regulations of the International Maritime Dangerous Goods Code (IMDG Code) require dangerous goods to be properly labeled (with label which conforms to the specification) for transport to serve as a warning and to make them easy to be identified. Evergreen Marine has therefore offered dangerous good placards which are in full compliance with the size and quality of the IMDG specification. These placards serve as a clear indication of dangerous goods among all other goods in the container during the transportation process. The company’s dangerous goods team is composed of talents with professional background and having the goods checked at all levels, it enables to prevent the occurrence of concealing and misreporting of dangerous goods</p>
Corporate Governance	Socioeconomic and regulatory compliance	<ol style="list-style-type: none"> 1. The company has established a corporate governance team and internal control mechanism for relevant departments to manage risks for exchange rate, interest rate, credit, liquidity, excessive market concentration, international political and economic, epidemic, sanctions, hackers, viruses and other invasions, abnormal climate, and sharp fluctuations in fuel prices, terminal strikes, delays in ships and docking, and poor quality for delivery, etc., Through risks identification, a proper corresponding countermeasures has been set up for minimizing the impact of risks. 2. As a globally reputable container shipping company, Evergreen Marine insists on conducting its business in a lawful, transparent and ethical manner and is committed to complying with global competition law, anti-bribery and anti-corruption law, privacy law and economic sanctions regulations. As such, the company has established regulatory compliance policies and guidelines to facilitate compliance, and supervises it so as to prevent illegal activities from happening.

Table2 The structure of corporate social responsibility committee

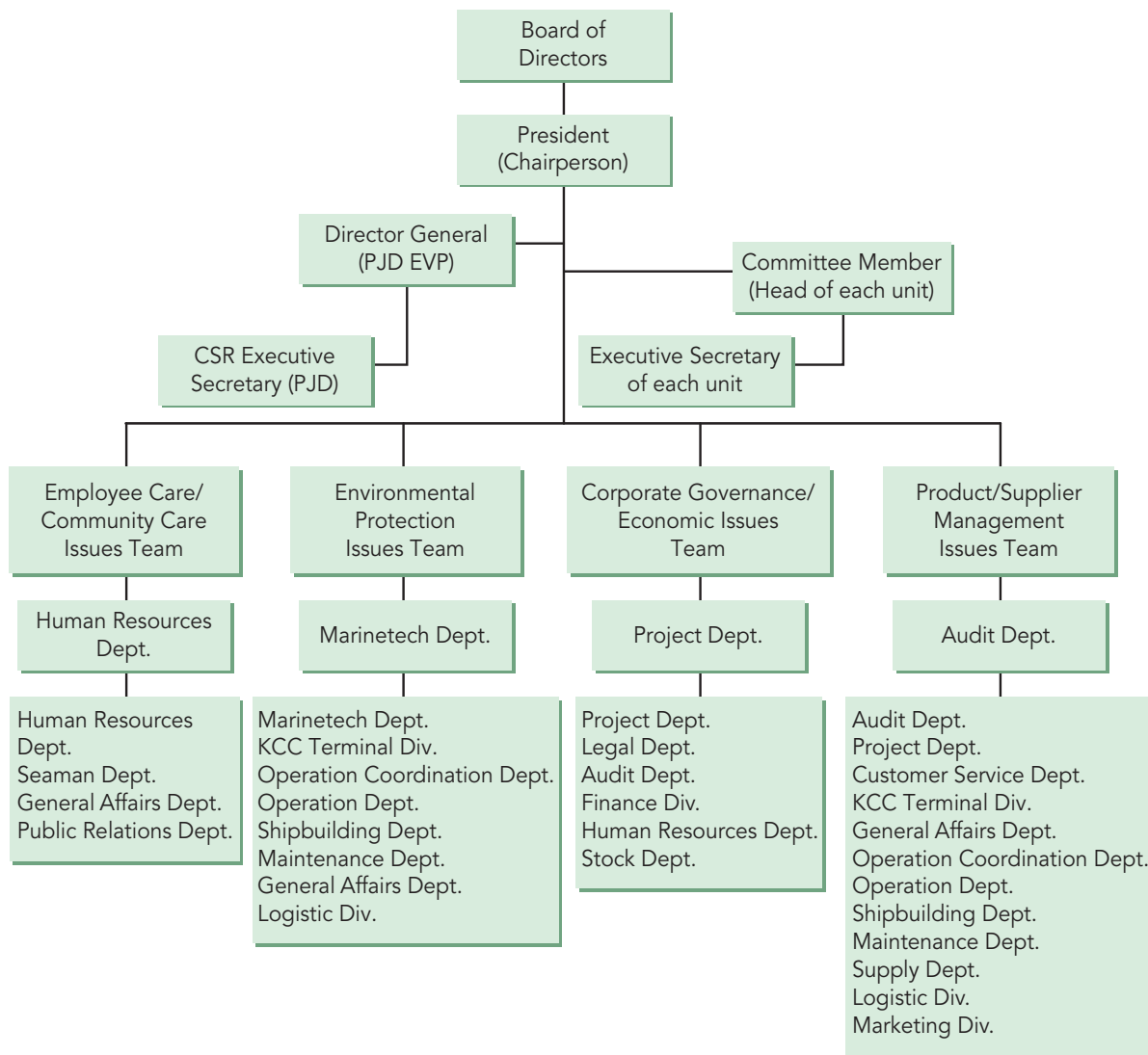


Table3 Statistics of greenhouse gas emissions, water consumption and waste disposal in recent years

- Statistics of greenhouse gas emissions from Evergreen self-owned vessels in the past 3 yearso

	2017	2018	2019
Fleet CO ₂ emissions (Tonne CO ₂ e)	5,923,081	6,139,371	5,903,899
Fleet CO ₂ emission rate (g/TEU-KM)	63.023	62.137	61.460

Note 1: Scope 1 (direct) GHG emissions only cover CO₂ emissions

Note 2: GHG inventory is based on GHG emissions = Energy consumption and GHG emission factor; The GHG emission factor is based on the values given in IMO MEPC/29/18/Dec.1989 and the GHG emission factor management table 6.03 edition issued by the MOEA Industrial Development Bureau (IPCC 4th Evaluation Report (2007)); GHG emission total was calculated using the operational control method.

- Statistics of greenhouse gas emissions from shore operations in the past 3 years

	2017	2018	2019
Direct GHG emissions (Tonne CO ₂ e)	3,935.66	2,706.09	2,917.12
Indirect GHG emissions (Tonne CO ₂ e)	23,798.36	22,131.01	21,368.94
GHG emission intensity (Tonne CO ₂ e/load)	3.78	3.51	3.06

Note 1: Scope 1 (direct) GHG emissions are calculated using the CO₂ equivalent generated by company vehicles. Scope 2 (indirect) GHG emissions are calculated using the CO₂ equivalent generated by electricity used in the office building. GHG emissions are summarized using the operational control method. Estimation method and source of coefficient: Energy emission = Energy consumption * GHG emission factor; The GHG emission factor is based on the values given in IMO MEPC/29/18/Dec.1989 and the GHG emission factor management table 6.04 edition issued by the MOEA Industrial Development Bureau.

Note 2: Work load refers to the number of containers handled by cranes (diesel or electric-powered).

- Statistics of greenhouse gas emissions from office building in the past 3 years

	2017	2018	2019
Direct GHG emissions (Tonne CO ₂ e)	17,645.45	17,995.38	16,320.75
Indirect GHG emissions (Tonne CO ₂ e)	3,477.00	3,320.00	3,234.30
Greenhouse gas emission intensity (Tonne CO ₂ e/M ²)	0.75	0.76	0.69

Note 1: Scope 1 (direct) GHG emissions are calculated using the CO₂ equivalent generated by company vehicles. Scope 2 (indirect) GHG emissions are calculated using the CO₂ equivalent generated by electricity used in the office building. GHG emissions are summarized using the operational control method. Estimation method and source of coefficient: Energy emission = Energy consumption * GHG emission factor; The GHG emission factor is based on the values given in IMO MEPC/29/18/Dec.1989 and the GHG emission factor management table 6.03 edition issued by the MOEA Industrial Development Bureau (IPCC 4th Evaluation Report (2007)); GHG emissions include CO₂, N₂O and CH₄; scope 2 was calculated using the site-based method.

Note 2: GHG emission intensity = Carbon emission of externally purchased electricity /Total building floor area 28036.4 M²

• Statistics of water consumption from Evergreen in the past 3 years

			2017	2018	2019
Ships at sea		Fresh water supply to the ship (ton)	100,932	103,217	88,643
Shore operations	Kaohsiung Terminal	Annual tap water consumption (degree)	33,298	25,798	25,377
		Sewage treatment volume (CMD)	8,686	6,121	7,968
	Evergreen Marine office building	Annual tap water consumption (degree)	25,904	25,370	25,006

Note: 1. Fresh water supply to the ship is based on the quantities requested by each ship.

2. Fresh water supply to shore operations is based on the actual quantity on the meter

• Statistics of waste disposal from Evergreen in the past 2 years

Item	Type	Disposal method	Unit	2018 Disposal Amount	2019 Disposal Amount	Remarks	
Ships at sea	Incinerator ashes	Recycle	m ³	75	70	1. The statistics doesn't include domestic waste, operational waste, kitchen waste, and medical waste that are unloaded from shore. 2. Unload waste calculated based on international common unit m ³ . 3. Due to non by weight calculation and small quantity, waste tires and lubricants are not included in the statistics.	
	Waste oil	Recycle	m ³	42,519	40,644		
Shore operations	Kaohsiung Terminal	Domestic waste	ton	256.70	222.88	The raw data for waste tires and waste oil does not include weight. Their quantities are also relatively small so were not included in the statistics.	
		Waste hardware & paper	ton	262.76	331.08		
	Evergreen Marine office building	Domestic waste	Incineration	ton	98.6	97.53	Incinerator treatment
		Recycle	Recycle	kilo	4,220	6,100	Recycled by the recycling company